

AOpen

DIGITALENGINE

DE45-Pro



Distribue par Anteor - www.anteor.com - Tel : 01 61 37 07 00

AOpen



Open Mind & Global Vision

Empowered your Applications



Digital Engine

**Digital
Entertainment**

PC TV
IPTV
DMA
STB
Car PC

**Digital
Health**

Panel PC
Low Radiation
Low Noise
Less Cables

**Digital
Office**

Thin Client
Secured PC
Trusted PC
PC Projector

**Digital
Signage**

Small Size AD
Quick Boot
NAND Flash
Easy Maintenance

**Game
machine**

Arcade Game
Dart
Dancing

KIOSK

Touch Panel

POS

Dual Display
COM Ports
CF Flash

Specification

CPU

Socket P Intel Core™ 2 Duo (Penryn) TDP 35W CPU

FSB 1066/800/667 MHz

CHIPSET

North Bridge: Intel GM45

South Bridge: Intel ICH9M

MEMORY

DDRII SO-DIMM 667/800 x 2 up to 4GB

GRAPHICS

Integrated Graphics GMA X4500MHD

LAN

Intel GbE LAN controller

AUDIO

Realtek HD AUDIO CODEC ALC662

EXPANSION SLOTS

mini Card slot x 1

Drive Bay

SATA Slot-in Slim ODD x 1

2.5" SATA 2 HDD x 1

WDT

1 ~255 sec/min

On Board I/O

USB x 4

Internal speaker connector

Proprietary SATA connector

Front Panel I/O

USB 2.0 port x 2

Power Button and Power, HDD indicator LED

Rear Panel I/O

HDMI x 1 (silicon image transmitter)

USB 2.0 x 2

D-Sub VGA x 2

HD Audio 2 ports (speaker out, Mic in)

GbE LAN

COM port x 1 (RS232)

DC 20/12V connector (with 90W power adaptor)

Form Factor

Cooler Supports up to 35W

166 (H) x 157 (L) x 48 (W) mm

Weight : 1.25kg (N.W. of full System)

Volume : 1.25 liters

Housing material 0.8mm SECC



Front outlook



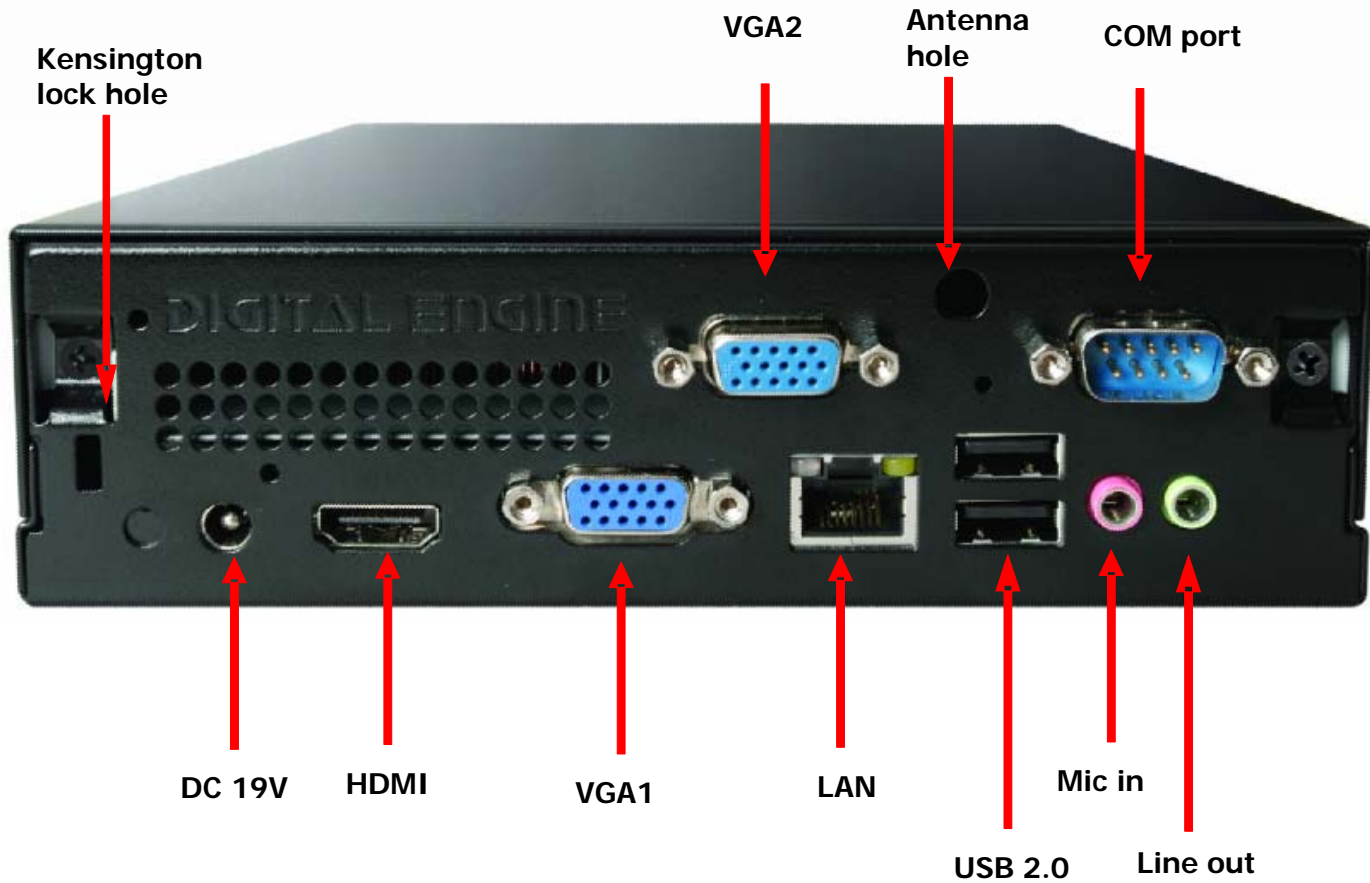
ODD Slot

USB x 2

Power Switch



Rear I/O



Distribue par Anteor - www.anteor.com - Tel : 01 61 37 07 00

Supports Dual Displays

- Supports dual Displays



Environment Specification

- **Temperature:**
Operating: $-10^{\circ}\text{C} \sim 55^{\circ}\text{C}$
Non-Operating: $-30^{\circ}\text{C} \sim 65^{\circ}\text{C}$
- **Humidity:**
95% RH(55°C non-condensed)
- **Vibration: (Random Vibration, with ODD)**
Operating: 0.45Grms, 10 ~ 500Hz
Non-Operating: 2Grms, 5 ~ 500Hz
- **Shock:**
Operating: Half Sine, 8G, 11ms
Non-Operating: Half Sine, 50G, 11ms
- **Drop test: IEC 60068-2-32**



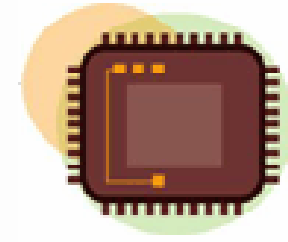
Special Design part

Phase in New Blue light LED to reduce the luminance of Power and HDD LED (at least reduce half luminance)



Watch Dog Timer – Hardware Ready

- ◆ Source code provided by request
- ◆ What is watchdog timer?



A watchdog timer is a useful tool in helping your system recover from transient failures. Since it is so common to find watchdogs built into modern microcontrollers, the technique is effectively free. If you are working on a mission-critical system, then either common sense or a regulatory body will insist that you use a watchdog. It's always a good idea to make your systems more self-reliant.

L Holder (attach under the table)



Accessory

HDMI To DIV cable



Converter board



EU power cord



90 Watt adapter





Optional Kits



VESA Wing

P/N : 59.ADE03.0110

To mount Digital Engine with 75mm and 100 mm VESA FDMI

MOQ : 20 sets





Vertical Stand Holder

P/N : 59.ADE02.0010

MOQ : 20 sets



Distribue par Anteor - www.anteor.com - Tel : 01 61 37 07 00

Cable Arrangement Holder

P/N : 59.ADE03.0210

To mount Digital Engine with 75mm and 100 mm VESA FDMI
with cable arrangement solution

MOQ : 20 sets



VESA Box

P/N : 90.ADE28.0010

To mount Digital Engine 75 and 100 mm VESA FDMI
With maximum 36.3 Kg load capability

MOQ : 20 sets



Tuner Kits

- MC770A Hybrid TV mini Card (DVB-T and Analogue)
- Main IC
 - DVB-T Demodulator : DIBCOM DIB7700
 - Tuner : +VIF / SIF XC3028
 - Video Decoder : CX3028
- Functional Specifications
 - MiniCard hybrid DVB-T and Analog TV tuner card
 - Watch digital and analog TV in Windows on your notebook
 - Bring TV function to Media Center Edition 2005
 - Free to air digital terrestrial DVB-T receptions (6/7/8 MHz)
 - Support High Definition digital TV channel
 - Advanced Silicon Tuner for worldwide analog TV receptions
 - Interactive , Teletext EPG ,and scheduler

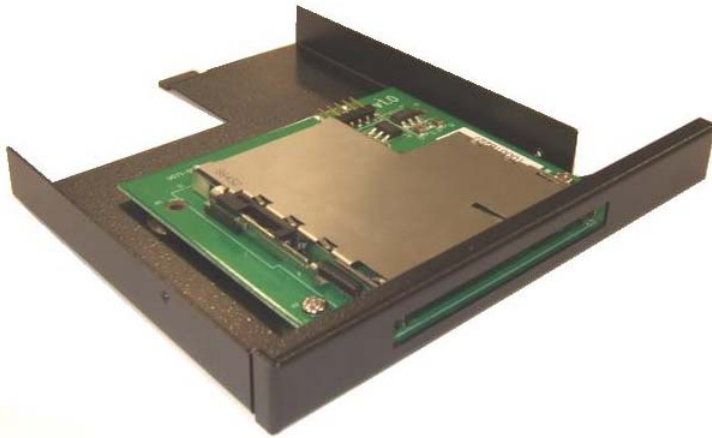


Wireless kits

- 802.11b/g, 54Mbps wireless LAN PCIe mini Card
- Main Chipset
 - Baseband / MAC / RF: Atheros AR2423
- Functional Specifications
 - Standard: IEEE802.11b; IEEE 802.11g; IEEE 802.11i
 - Bus Interface: PCI Express mini Card
 - Security: 64-bit, 128-bit and 152-bit WEP, AES, TKIP, WPA2
 - Operating Voltage: 3.3 V \pm 5% I/O supply voltage
 - Data Rate:
802.11g compliant: 11, 5.5, 2, 1 (DSSS/CCK); 6,9, 12, 18, 24, 36, 48, 54, 108 (OFDM)
Mbps data rates



Internal Express Card Reader

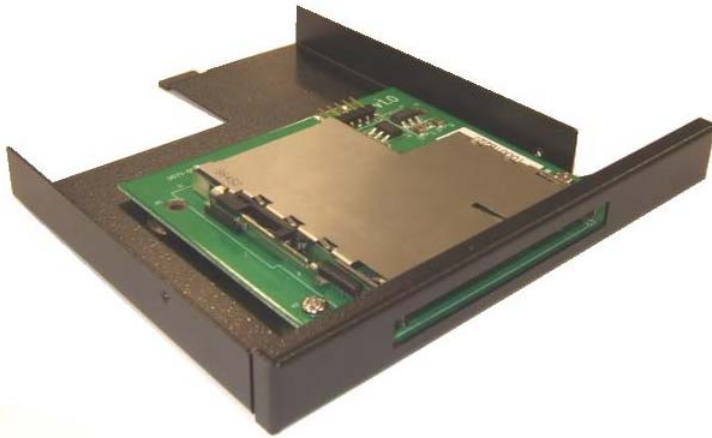


Distribue par Anteor - www.anteor.com - Tel : 01 61 37 07 00

Internal Express Card Reader

- **Compliant with USB 2.0**
- **P/N 90.ADE62.0010**
- **Compliant with ExpressCard/34 and ExpressCard/54 module outline dimension**
- **Provides DC3.3V, 3.3Vaux and 1.5V power output**
- **Works with various types of USB 2.0 base EV-DO(3G) and HSDPA (3.5G) broadband ExpressCard PC cards through USB 2.0 port**
- **Only support USB interface of ExpressCard**
- **OS support: Windows XP/Server 2003/Vista**

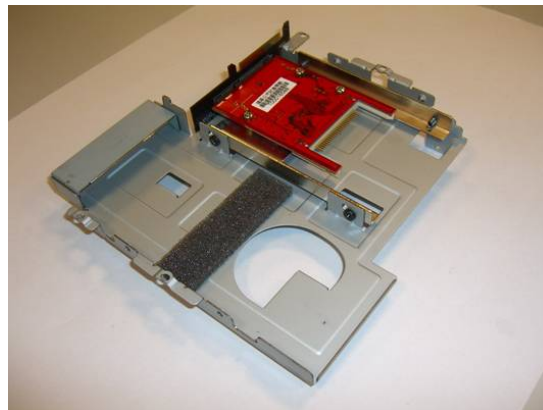
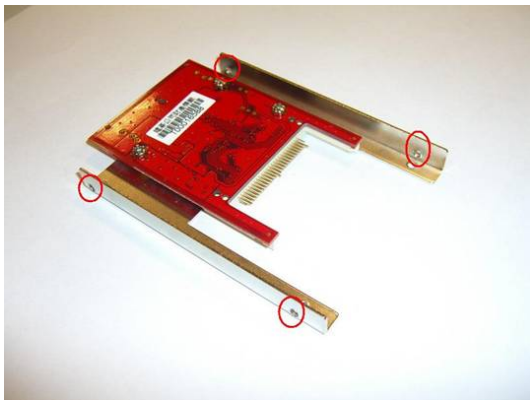
Internal Express Card Reader



Distribue par Anteor - www.anteor.com - Tel : 01 61 37 07 00

CF Card Reader

- 22 pi SATA make connector
- Support CompactFlash™ cards (Type I & II) or a IBM Microdrive™
- Transparent to the operating system and does not require any drivers
- The CF card can be the primary bootable device containing the OSD and application
- Include 2.5" hard driver frame
- Support any size of CF memory card up to 2TB
- With bracket to fit into AOpen Digital Engine

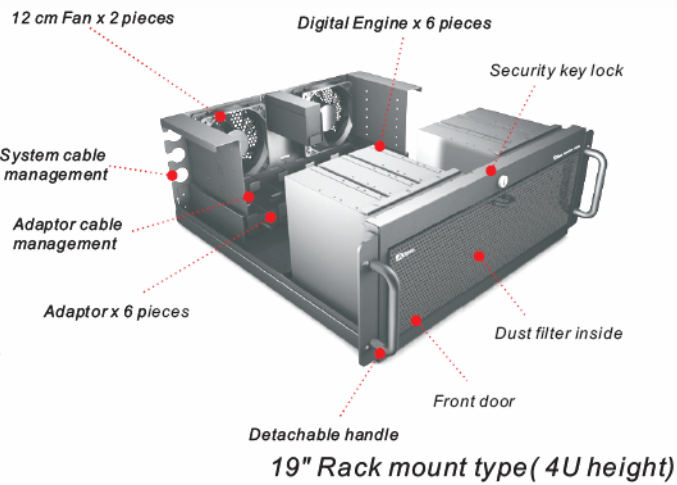


Titan One

- Fit in 32" to 60" display with digital engine, up to 100kgs.
- Angle adjustable of wall mount for 20 degree.
- Mounting Rack with Easy Cable Management
- Easy maintenance by slide drawer of digital engine without moving the display
- Security key-lock design.
- Bubble Level included.
- UL listed *
- VESA Mount Compliance *



Engine Core



Distribue par Anteor - www.anteor.com - Tel : 01 61 37 07 00